
 MIAMI-DADE

**MIAMI-DADE COUNTY HOMELESS TRUST CENSUS
PRELIMINARY RESULTS, THURSDAY, JANUARY 24, 2013**

COUNT BY HOMELESS OUTREACH TEAMS

AGENCY	#OF TEAMS	# OF HOMELESS
City of Miami-City of Miami, City Limits	9	511
City of Miami Beach- Miami Beach	7	138
Miami-Dade County-South Dade, South of Kendall Drive to Monroe County Line	5	66
Miami-Dade County-Unincorporated Miami-Dade County, North of Kendall Drive to Broward County Line	10	124
SUBTOTAL	31	
SUBTOTAL-(on the Street)		839
SHELTERED HOMELESS		
Total Homeless in Emergency Shelter		1407
Hotel/Motel		96
Total Homeless in Transitional Housing		1362
Safe Haven		30
Subtotal-Shelter Homeless		2895
Total Homeless In Dade County		
(On-The Street & Sheltered)		3734
Weather Conditions: Clear high in the low 60's		

HOMELESS CENSUS RESULTS

Summary - Life - To - Date Census

	Actual Street Count	Multiplied By (2)***	Total Sheltered**	Total Census Results
Feb-96				8000
Apr,97	2161	4322		4322
Oct,97	2138	4276		4276
Feb,98	2403	4806		4806
Oct,98	2490	4980	2220	7200
Apr,00	1737	3474	2093	5567
Nov,00	2141	4282	2708	6990
Jun,01	2604	5208	3050	8258
Nov,01	2001	4002	2873	6875
Apr,02	2094	4188	2912	7100
Nov,02	1960	3920	2969	6889
Apr,03	2211	4422	2998	7420
Dec,03	2231	4462	3165	7627
Apr,04	1982	3964	3093	7057
Jan-05	1989		3171	5160
Sep-05	2297		2759	5056
Jan-06	2182		2833	5015
Jul-06	1754		2955	4709
Jan-07	1380		3012	4392
Jul-07	1683		3151	4834
Jan-08	1347		3227	4574
Jan-09	994		3339	4333
Aug-09	1089		3067	4156
Jan-10	759		3120	3879
Sep-10	847		3083	3930
Jan-11	789		2988	3777
Jun-11	898		3011	3909
Jan-12	868		3108	3976
Aug-12	894		2769	3663
Jan-13	839		2895	3734

*

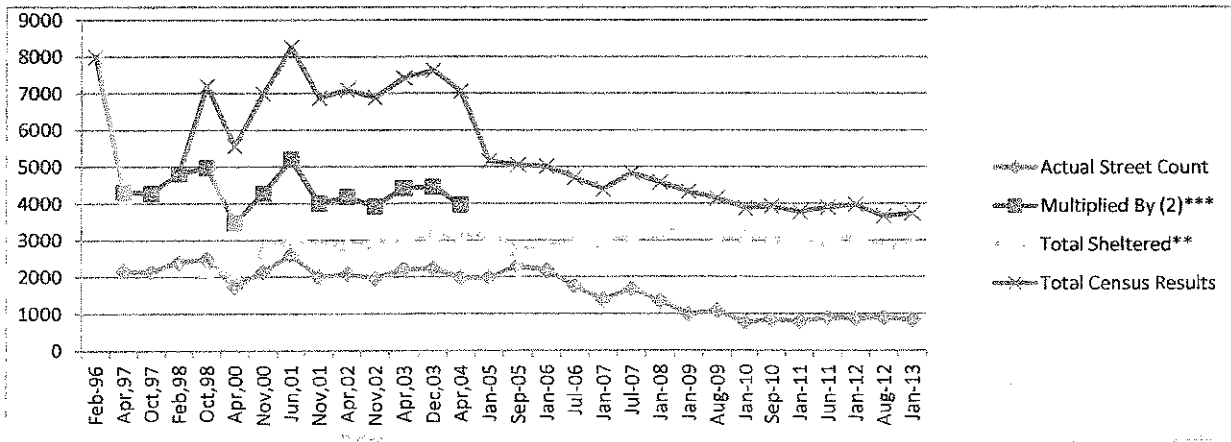
* Based on the State's approved counting methodology

** Please note that there was no data collected under "Total Sheltered" for April 1997, October 1997

and February 1998.

*** 1999 Counts were not used due to discrepancies in counting methodologies.

**** Multiplier was eliminated January 2005, census methodologies standardized with law enforcement



SUMMARY -ALL STREET COUNTS LIFE-TO-DATE

Outreach Providers	Miami Homeless Assistance Programs (City of Miami)	Formerly Douglas Gardens 4/08 City of Miami Beach (Miami Beach)	Formerly Metathery Institute Outreach-Cummins (South of Kendall Dr.) 12/05 (DHS Homeless Assistance Programs) 8/09 (City of Miami)	Formerly DHS Homeless Assistance Programs (balance of County) 8/09 (City of Miami)	Subtotal	Total w/Multiplier of 2
1999**					6000	8000
Apr. 1997/Count # 1	1013	152	735	261	2161	4322
Number of Teams	7	3	5	4	18	
Oct. 1997/Count # 2	874	116	795	353	2138	4276
Number of Teams	8	2	5	5	20	
Feb. 1998/Count # 3	623	159	809	812	2403	4806
Number of Teams	9	2	5	8	24	
Oct. 1998/Count # 4	737	111	819	823	2490	4980
Number of Teams	6	1	5	8	20	
Apr. 2000/Count # 7	838	132	324	443	1737	3474
Number of Teams	8	2	4	9	23	
Nov. 2000/Count # 8	822	314	378	627	2141	4282
Number of Teams	8	2	4	9	23	
Jun. 2001/Count # 9	1157	277	353	817	2604	5208
Number of Teams	8	2	3	9	23	
Nov. 2001/Count # 10	867	281	432	421	2001	4002
Number of Teams	9	3	3	10	25	
Apr. 2002/Count # 11	926	255	209	704	2094	4188
Number of Teams	9	3	3	10	25	
Nov. 2002/Count # 12	980	310	173	497	1960	3920
Number of Teams	9	3	3	10	25	
Apr. 2003/Count # 13	1152	301	283	478	2214	4428
Number of Teams	9	3	3	10	25	
Dec. 2003/Count # 14	945	304	308	674	2231	4462
Number of Teams	10	4	3	10	27	
Apr. 2004/Count # 15	827	259	169	727	1982	3964
Number of Teams	10	4	3	10	27	
Jan. 2005/ Count #16	759	239	106	885	1989	***
Number of Teams	10	4	4	11	29	
Sept. 2005/ Count #17	738	336	228	995	2297	***
Number of Teams	10	5	3	11	29	
Jan. 2006/ Count #17	748	218	176	612	1754	***
Number of Teams	10	4	4	10	28	
July. 2006/ Count #18	849	270	433	630	2182	***
Number of Teams	10	4	4	9	27	
Jan. 2007/ Count #19	447	173	246	514	1380	***
Number of Teams	10	3	4	9	26	
July. 2007/ Count #20	613	254	261	555	1683	***
Number of Teams	10	4	4	9	27	
Jan. 2008/ Count #21	514	98	193	542	1347	***
Number of Teams	9	4	4	9	26	
Jan. 2009/ Count #22	411	141	112	330	994	***
Number of Teams	9	4	3	7	23	
Aug. 2009/ Count #23	574	232	85	98	1089	***
Number of Teams	9	4	3	7	23	
Jan. 2010/ Count #24	512	149	65	33	759	***
Number of Teams	9	4	3	7	23	
Sept. 2010/ Count #25	499	196	81	71	847	***
Number of Teams	9	4	5	8	26	
Jan. 2011/ Count #26	487	177	58	67	789	***
Number of Teams	9	5	5	10	29	
June. 2011/ Count #27	534	218	51	95	898	***
Number of Teams	9	6	5	10	30	
Jan. 2012/ Count #28	535	173	72	88	868	***
Number of Teams	9	5	5	10	29	
Aug. 2012/ Count #29	514	186	56	138	894	***
Number of Teams	9	5	5	10	29	
Jan. 2013/ Count #30	511	138	66	124	839	***
Number of Teams	9	7	5	10	31	

*Estimated number based on Miami Coalition for the Homeless data

**1999 counts not used due to discrepancies in counting methodologies

***Multiplier eliminated, Census methodologies standardized with law enforcement presence in all teams, 23 additional volunteers, and 2 additional teams assigned to South Dade area (1