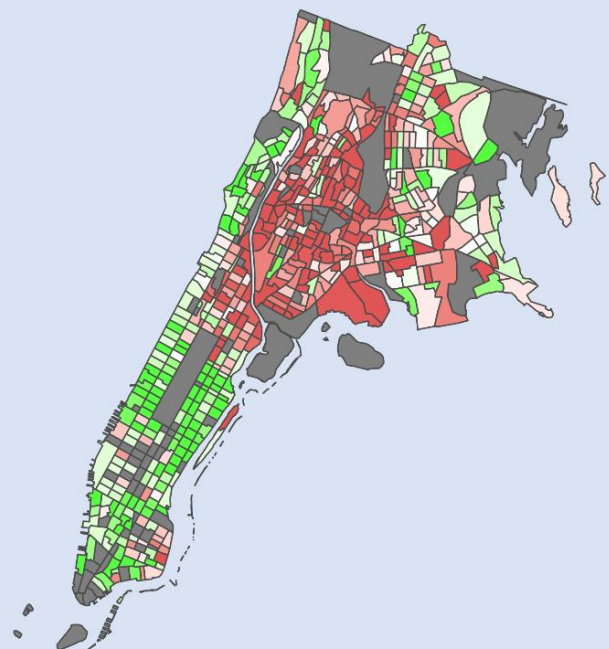


Health and Housing: Part of the Strategy to Build a Bigger Tent

David Erickson

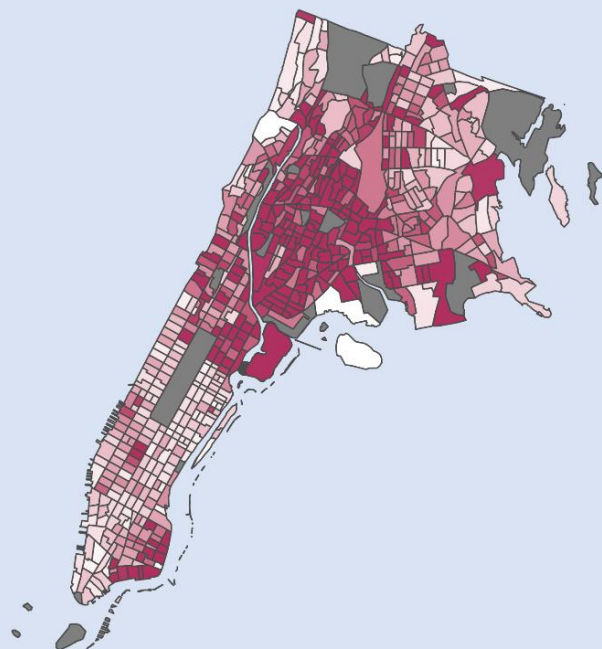
Federal Reserve Bank of New York



Life Expectancy



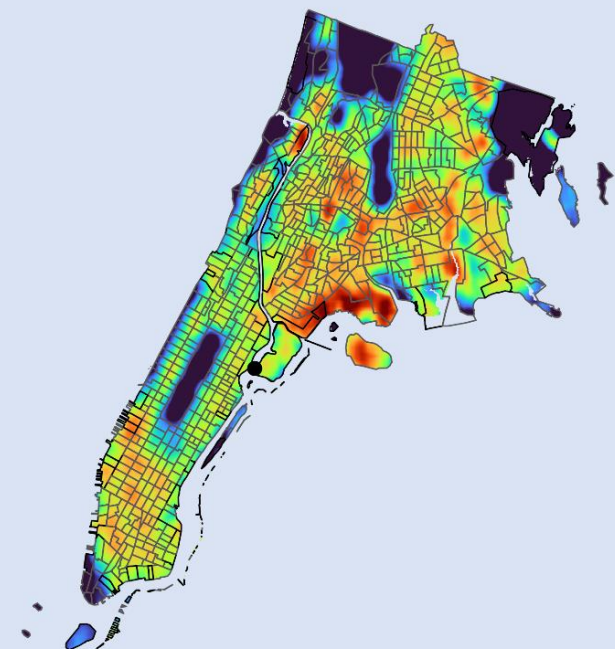
76 80 84



Share of Residents in Poverty



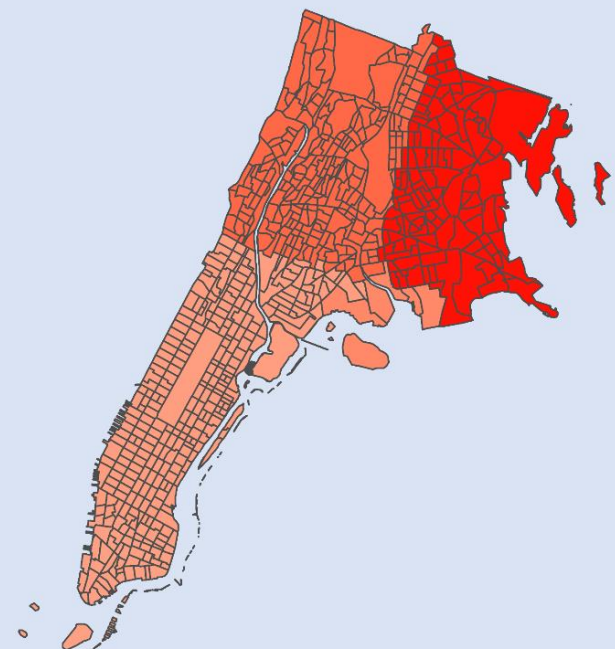
5% 15% 25%



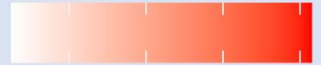
Heat Deviation



-8° -4° 0° 4° 8°



Air Pollution - Particulate Matter ($\mu\text{g}/\text{m}^3$)



6 8 10 12

Financial Innovation

- **Secondary Market
for CD Loans**
- **Stronger
Partnerships--CD
and Impact
Investing**
- **Fannie Mae for
Climate Resilient
Neighborhoods**
- **Investing at the
Enterprise Level**

Community Development Finance/ Impact Investing

Financial Innovation

- **Secondary Market for CD Loans**
- **Stronger Partnerships--CD and Impact Investing**
- **Fannie Mae for Climate Resilient Neighborhoods**
- **Investing at the Enterprise Level**

Community Development Finance/ Impact Investing

Health

Financial Innovation

- **Secondary Market for CD Loans**
- **Stronger Partnerships--CD and Impact Investing**
- **Fannie Mae for Climate Resilient Neighborhoods**
- **Investing at the Enterprise Level**

Community Development Finance/ Impact Investing

Health

Climate

Financial Innovation

- **Secondary Market for CD Loans**
- **Stronger Partnerships--CD and Impact Investing**
- **Fannie Mae for Climate Resilient Neighborhoods**
- **Investing at the Enterprise Level**

Community Development Finance/ Impact Investing

Health

Climate

Anti-Poverty

Financial Innovation

- **Secondary Market for CD Loans**
- **Stronger Partnerships--CD and Impact Investing**
- **Fannie Mae for Climate Resilient Neighborhoods**
- **Investing at the Enterprise Level**

**Community
Need**

**Community
Ownership**

**Community Development Finance/
Impact Investing**

Health

Climate

Anti-Poverty

Financial Innovation

- **Secondary Market for CD Loans**
- **Stronger Partnerships--CD and Impact Investing**
- **Fannie Mae for Climate Resilient Neighborhoods**
- **Investing at the Enterprise Level**